

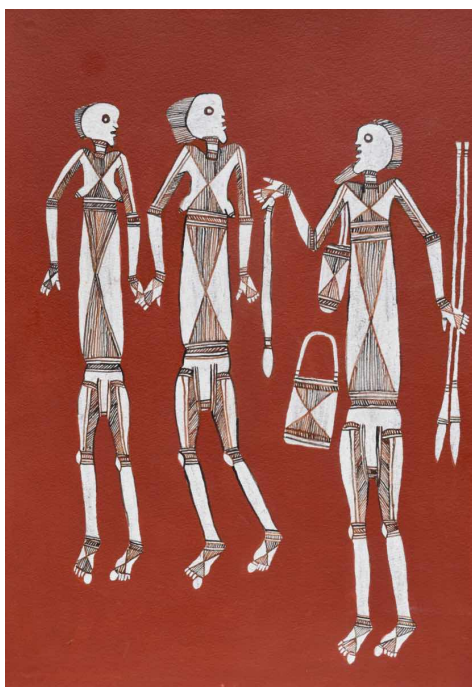
5 Malakoff Street, North Caulfield, Vic, 3161
Telephone: (61 3) 9509 9855 Facsimile: (61 3) 9509 4549
Email: ausart@diggins.com.au Website: www.diggins.com.au
ABN.19006 457 101

LAURINE · DIGGINS · FINE · ART

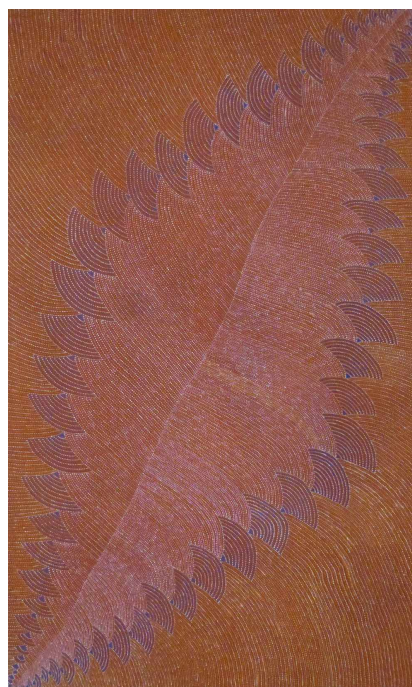
A CLOSER LOOK AT...

THE NEXT GENERATION: Lorraine Kabbindi White and Genevieve Kemarr Loy

Both Lorraine and Genevieve create paintings inspired by their ancestral landscapes. The narrative lineage dates back many thousands of years and both these young women are privileged in having been able to learn much directly from their grandparents, in Lorraine's case the respected Bardayal Lofty Nadjamerrek AO and in Genevieve's, the celebrated Nancy Kunothe Petyarr. As well as painting techniques, they have absorbed and been taught stories relating to the spirit beings, the flora, fauna and the creation and shaping of their respective countries, West Arnhem Land and Utopia in Central Australia. Their art is contemporary yet steeped in history with an intrinsic emotional, custodial and spiritual connection to the land. Both women have made the decision to become artists and in doing so fulfill a keen sense of responsibility by ensuring their culture continues to flourish.



Bardayal Lofty Nadjamerrek c.1926 – 2009



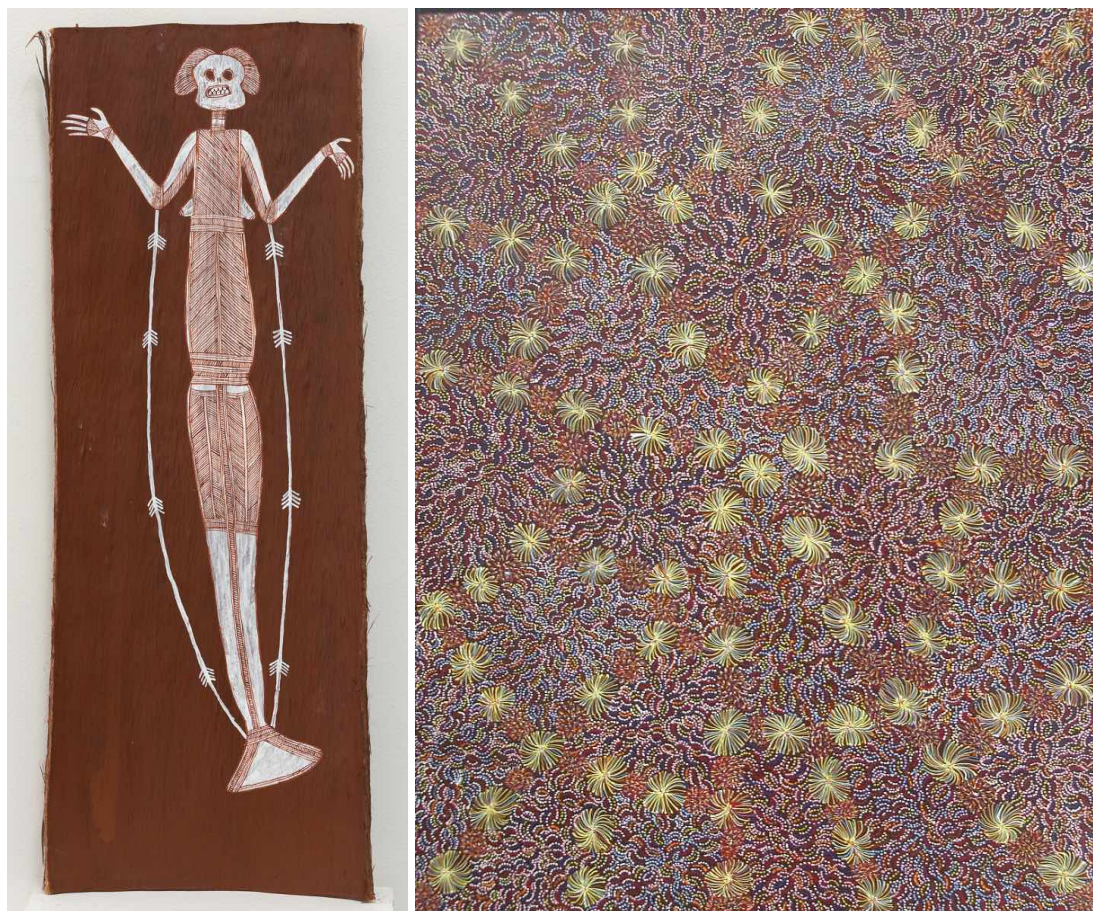
Nancy Kunothe Petyarr 1934 – 2009

Sugarbag Spirits c.1985 ochres on paper 75 x 53 cm *Mountain Devil Dreaming* 2007 synthetic polymer on linen 198 x 121 cm

Lorraine is based in Melbourne, although regularly visits her grandfather's country Mankung Djang in West Arnhem Land. It is from here that she sources the bark she paints on – a physical connection to place as well. Absorbing the myriad of information she has accrued from watching and listening and assisting her elders, she creates her own works, on paper and bark, using a similarly careful and detailed painted linework as her grandfather. The use of white against red ochre or black provides a contrast that allows her close parallel lines to really shimmer. Her work depicts the plants, animals and spirit beings of her grandfather's country.

In *Ngalkanburriyaymi* Lorraine has depicted the freshwater mermaid that the Bininj (Aboriginal people) believe like to live around the root of trees that are submerged in water. Ngalkanburriyaymi start out in a tadpole-like form and as they grow older they develop fish tails. They spend most of their time in the water but are able to sit on the banks of billabongs. When fully grown they are able to change their tails into legs and walk on land to forage for food. They also change into dragonflies at the end of the Wet Season, which signifies to the bininj people the rains have finished. Ngalkanburriyaymi are said to have namarnkol

(barramundi) as pets and that ngalyod, the rainbow serpent, serves as their protector. These spirits are guardians of sacred waterholes.



Lorraine Kabbindi White 1991 - *Ngalkanburriyaymi (Mermaid)* 2017 ochre on bark 77 x 27 cm Genevieve Kemarr Loy 1982 - *Untitled* 2010 synthetic polymer on linen 91 x 120 cm

The narrative stimulus for Genevieve's work is also linked to the stories, of flora and fauna of her grandmother's country and that of her father, Cowboy Loy Pwerl's country in Utopia, north east of Alice Springs. Whilst her father, custodian of the Bush Turkey (Arwengerrp) story has taught her this particular narrative, Genevieve has made it her own through her harmonious and inspired colour palette and her fine detailed mark-making across the canvas, especially impressive on the large-scale she prefers to work on.

We can see in her *Untitled* painting in the exhibition the landscape is equally important, the pure beauty and color of nature are brought to the fore with the floral patterning obscuring the tracking marks left by the bush turkey. Despite the presumption of a red sandy desert, Utopia flourishes with trees, flowering shrubs and elegant grasses and can be awash with colour with seasonal flowers, particularly after a period of rain. In *Untitled* the yellow star shapes are directly inspired by flowering plants with spiky seed heads encountered by Genevieve in Utopia.

Both Lorraine and Genevieve have a genuine and fundamental connection with their ancestral county, a connection which continues to flourish strongly through the art of this 'next generation'.

THE NEXT GENERATION: Lorraine Kabbindi White and Genevieve Kemarr Loy
showing until Thursday 28 September 2017

To **view the exhibition** and **listen to the artists speak** about their work and view the video of the **exhibition opening** with **Aunty Joy Murphy AO** and **Nova Peris OAM** please visit our website : www.diggins.com.au

LAURINE DIGGINS FINE ART Gallery Hours: Tues – Fri 10am – 6pm, Sat 1pm – 5pm
Tel: (61) 39509 9855 Email: ausart@diggins.com.au